

Opportunities to be Enterprising?

Dr Anne Miller
Enterprise Programme Manager

anne.miller@mpls.ox.ac.uk

What does 'Enterprise' mean to you?

Enterprise and Entrepreneurship in MPLS



<https://www.mpls.ox.ac.uk/enterprise>

Key enterprise skills

- creative thinking, team working, presentation, design, planning and communication
- learn how to take an idea, develop it and build a viable business model
- cultivate a proactive 'can do' mindset
- become more employable
- do something new and have fun!

A Progressive Enterprise Programme for MPLS

BUILD

Advanced courses
with SBS (I2I, F&F)

EXPLORE

Lunchtime talks
Half- day short courses
Connecting with Industry courses
Scientific Entrepreneurship course

LEARN

Introduction to Enterprise and Entrepreneurship
Basics of IP and Communications

MPLS Enterprise Fellows



- Act as connectors between researchers and students interested in exploring the Oxford enterprise ecosystem
- Exploring collaborations and new ventures as well as educational structures

Interactive workshops....



Innovation and Impact courses in-person and on-line



I2I & Founders and Funders: links entrepreneurial DPhils and PostDocs with MBAs....



Talks by new and successful DPhil entrepreneurs....



RisingWISE, award-winning partnership programme, with Cambridge and industry for STEM women



Enterprising Women



- Termly GroWISE meet-ups (via Zoom and in-person social events)
- Speakers sharing their stories of being enterprising/ entrepreneurial, mainly from SeedWISE and RisingWISE programmes
- SeedWISE : sign up now! –new programme starting April 0223
- <https://www.mpls.ox.ac.uk/enterprise>

GroWISE Nimble Negotiation Programme



USER-GENERATED SKILLS DEVELOPMENT



CREO
INCUBATOR

Tues 28 Feb 13.00-13.20 & Tues 7 Mar 12.30-14.00 workshop

ALL: GroWISE: Nimble Negotiation

GroWISE Nimble Negotiation Programme enables you to develop practical negotiation skills and a robust deal-making strategy.

Get on board for a transformative journey, attainable through a unique interactive microlearning framework.

[Find out more](#)

Currently running: i-City

- New competition sponsored by MathWorks to deploy AI and Machine Learning to address sustainability & the energy trilemma:



The Entrepreneurship Hub

INTERNATIONAL
WOMEN'S DAY TALK

**NAVIGATING A
SCIENCE SPIN-OUT: A
REFLECTION ON KEY
MOMENTS IN THE
JOURNEY**

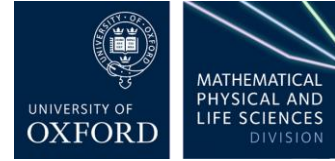
WITH PROFESSOR
KYLIE VINCENT AND
DR HOLLY REEVE



Increasing Diversity in Enterprising Activities

**21ST FEBRUARY
1PM - 2.30PM**

SBS/ Entrepreneurship Centre

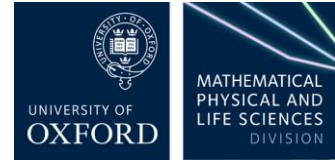


Innovation Day: Friday 24th February.

10.30 am onwards.

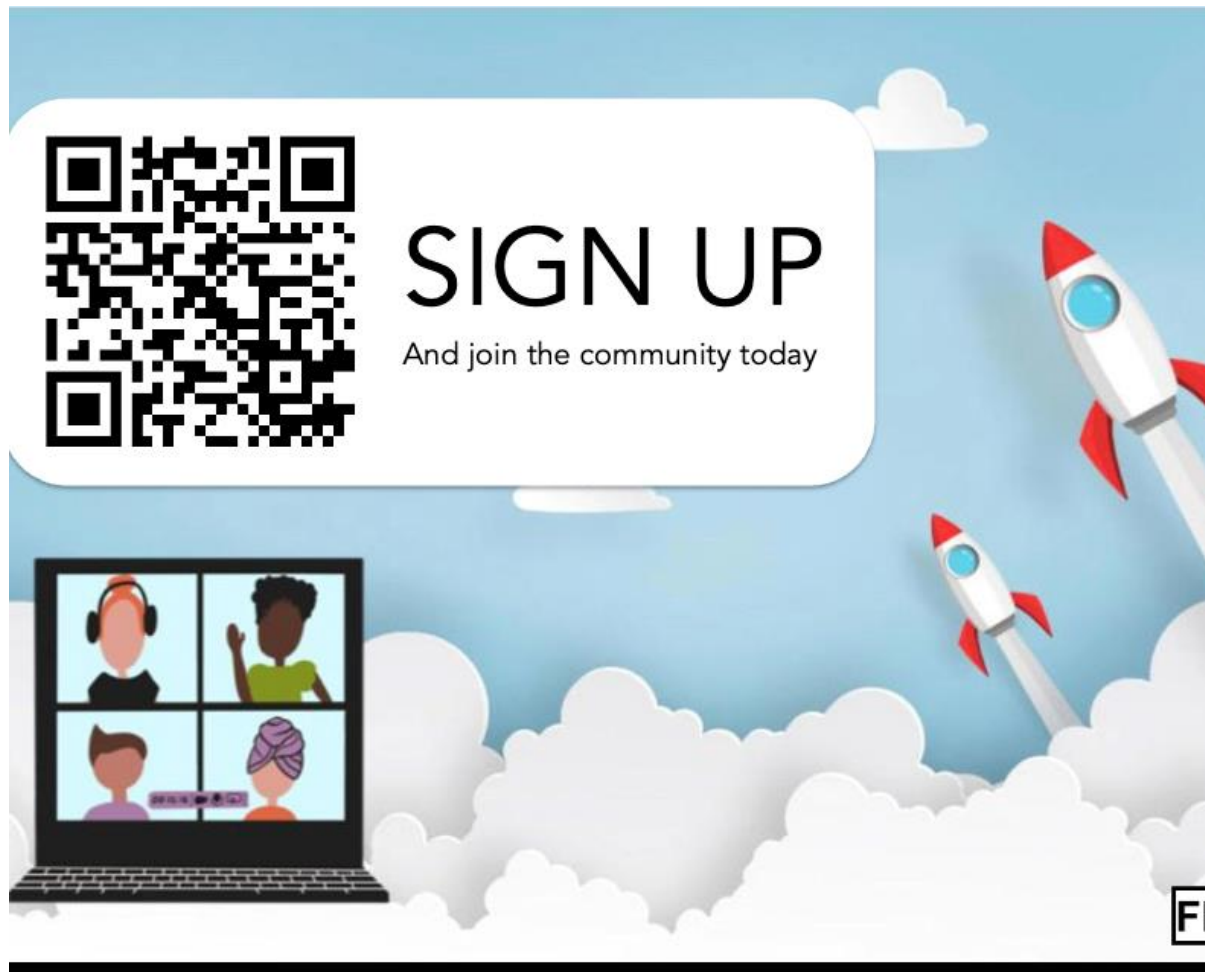
Open to students and the wider University of Oxford, inc. alumni - Sign up [here](#).

SBS/ Entrepreneurship Centre



- [Oxford Venture Builder](#), a programme for all members of the University of Oxford - including students, staff, faculty members and researchers - who are looking to develop their business ideas.
- Open to both individuals and teams who want to develop their business ideas.
- Runs April-May 2023, applications now open: **deadline 1st March**. N.B. no equity is taken from those who participate.

SBS Founders & Funders



For Post-Doc explorers:

[Wilbe BSF Fellowship - a course for aspiring scientist founders](#). Turn your research into a successful business and learn practical skills to navigate the venture world.

Limited fully-funded places for MPLS postdocs.
Deadline: Fri 10 March



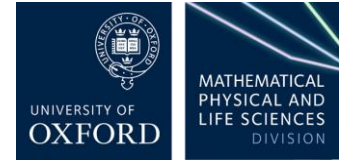
BECOME A SCIENCE FOUNDER

SCIENTISTS • ENTREPRENEURSHIP • COMMUNITY

Applications open for Class9

wilbe.com/bsf

For more information



<https://www.mpls.ox.ac.uk/enterprise>

or contact me at

anne.miller@mpls.ox.ac.uk