

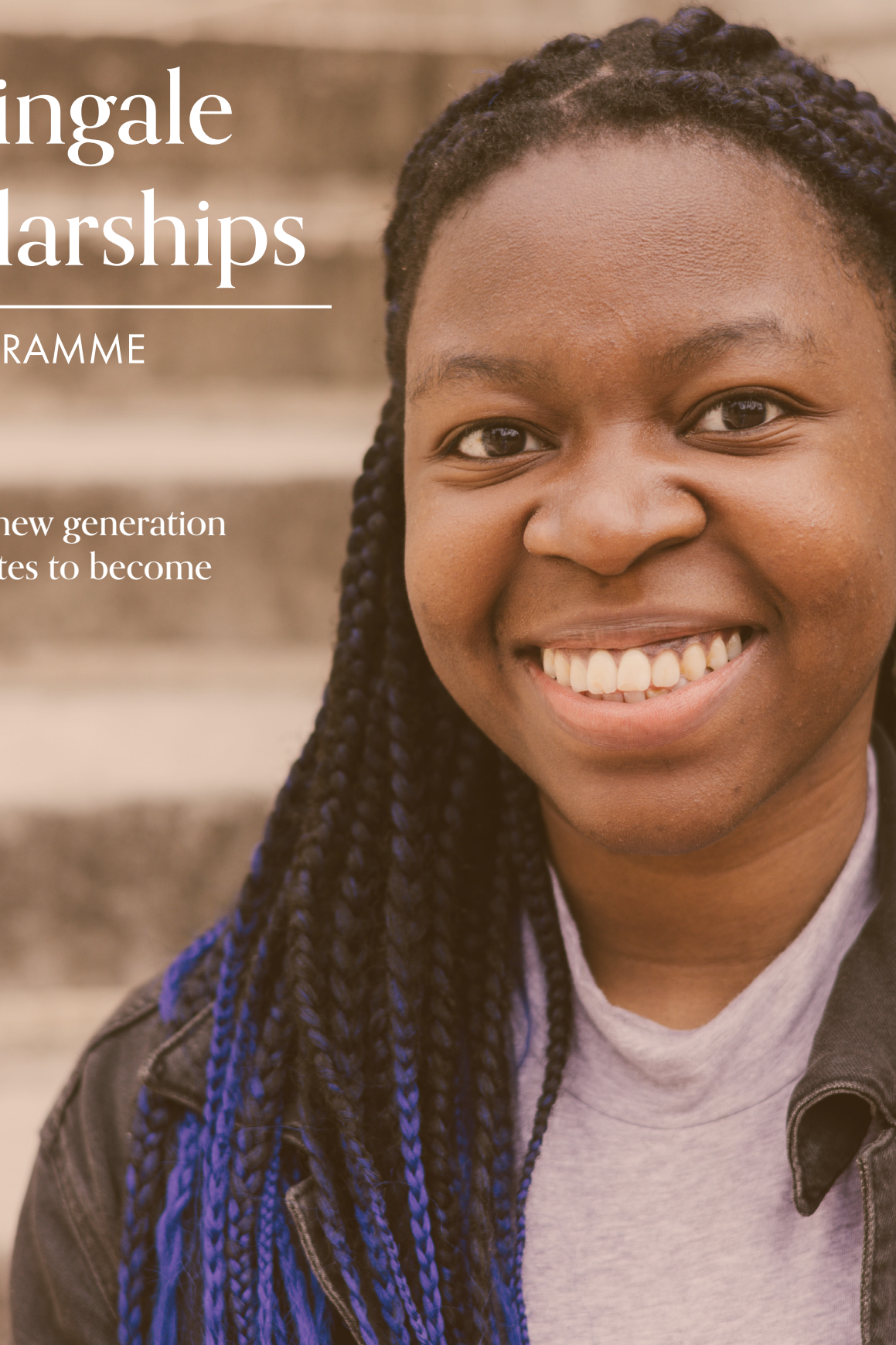
MARTINGALE

POSTGRADUATE FOUNDATION

# Martingale Scholarships

2024 PROGRAMME

Supporting a new generation  
of postgraduates to become  
STEM leaders







## Our partner universities







# Who we are

The Martingale Foundation funds and supports a new generation of STEM postgraduates.

Through fully-funded scholarships and access to a community of pioneering leaders, we enable students to pursue postgraduate study in STEM subjects at some of the leading research universities in the UK.

What does a Martingale Scholarship include?

-  A fully-funded scholarship to pursue a master's degree at one of our partner universities and tailored support to apply for a Martingale PhD scholarship
-  All tuition fees and research expenses covered, including a tax-free stipend for living costs
-  Access to the Martingale Development Programme, including leadership training and access to top academic and industry professionals
-  Membership of a pioneering community of future STEM leaders.

Launched in 2023, the Martingale Foundation is currently incubated by Ark Ventures, one of the country's leading education charities. We are proudly supported by world-leading algorithmic trading company XTX Markets, whose generosity has helped make our scholarships possible.

'Martingale was created to enable talented individuals to succeed. We are proud to be supporting new voices to become the leaders of tomorrow.'

CASSANDRA HUGILL, CEO





'It's quite clear that everyone at Martingale wants to give you the opportunity to do your best in the application process as it was very straightforward and well communicated.'

JOEL





# Who we are looking for



Do you have, or are you completing, an undergraduate degree in maths or a relevant STEM subject?



Do you want to pursue postgraduate studies in the mathematical or statistical sciences?



Do you want to join a growing community of future STEM leaders?

# Eligibility criteria

We are currently offering 2024/25 scholarships for a postgraduate degree in the mathematical sciences.

We are looking for candidates who have the academic potential and motivation to undertake postgraduate research, while contributing to the cohort of Martingale Scholars. Scholars will have the opportunity to apply for a Martingale PhD scholarship after their master's.

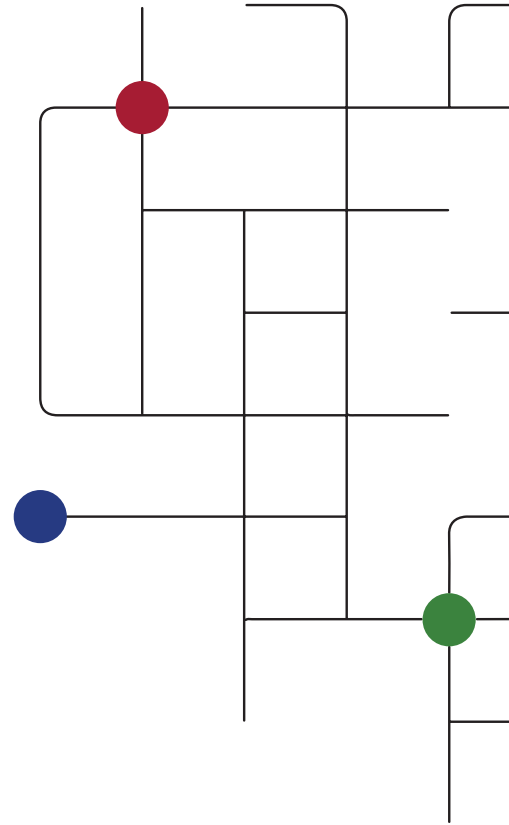
To be eligible for a Martingale Scholarship, you must:

- Have achieved, or be on track to achieve, a first or upper-second class bachelor's degree in mathematics or a related subject, from any university
- Be eligible to commence a master's degree at a UK university from September 2024
- Qualify for 'Home Fee' status at our partner universities
- Have been to school in the UK or Ireland for at least three years between the ages of 11 and 16; or if not, for at least seven years between the ages of 4 and 18
- Have completed your GCSEs or equivalent at a state-funded school, or received a substantial scholarship or bursary to attend a fee-paying school or college
- Have faced or are facing financial barriers, such as qualifying for a means-tested maintenance loan or grant that is above the minimum levels of support detailed from your regional or national funding body

Applicants will be prioritised based on evidence of financial need, academic potential and motivation for postgraduate research.

'Compared to alternate scholarships, the Martingale scholarship struck me as a unique opportunity. Not only did they offer to fund my postgraduate education, which was something I found very daunting beforehand, but the promise of building a cohort of like minded scholars was not something I have seen anywhere before.'

JOSH



# How to apply

There are three stages to the Martingale scholarship application process:

## 1) APPLY TO MARTINGALE

To apply, you will need to complete our online application form. This helps us understand your background and your motivations to become a Martingale Scholar. You will need to provide an academic transcript, evidence of financial need, and two referees.

If you are shortlisted, you will be invited to an assessment centre, where you will be interviewed by an academic panel and a Martingale panel. We will assess your academic potential and your motivation to do postgraduate research. We will also assess how you would contribute to the cohort of Martingale scholars.

Successful candidates will be offered a scholarship-in-principle. This means you will be awarded a full scholarship, subject to receiving and meeting the conditions of an offer for an eligible course from a partner university. Martingale Scholars will be supported to apply for a Martingale PhD scholarship after their master's.

## 2) APPLY TO PARTNER UNIVERSITIES

Scholars-in-principle will then apply directly to one or more partner universities for an eligible course.

You will complete a separate application for each university, which must be done in accordance with the university's standard admissions process and deadlines. You will also submit to Martingale your university preferences.

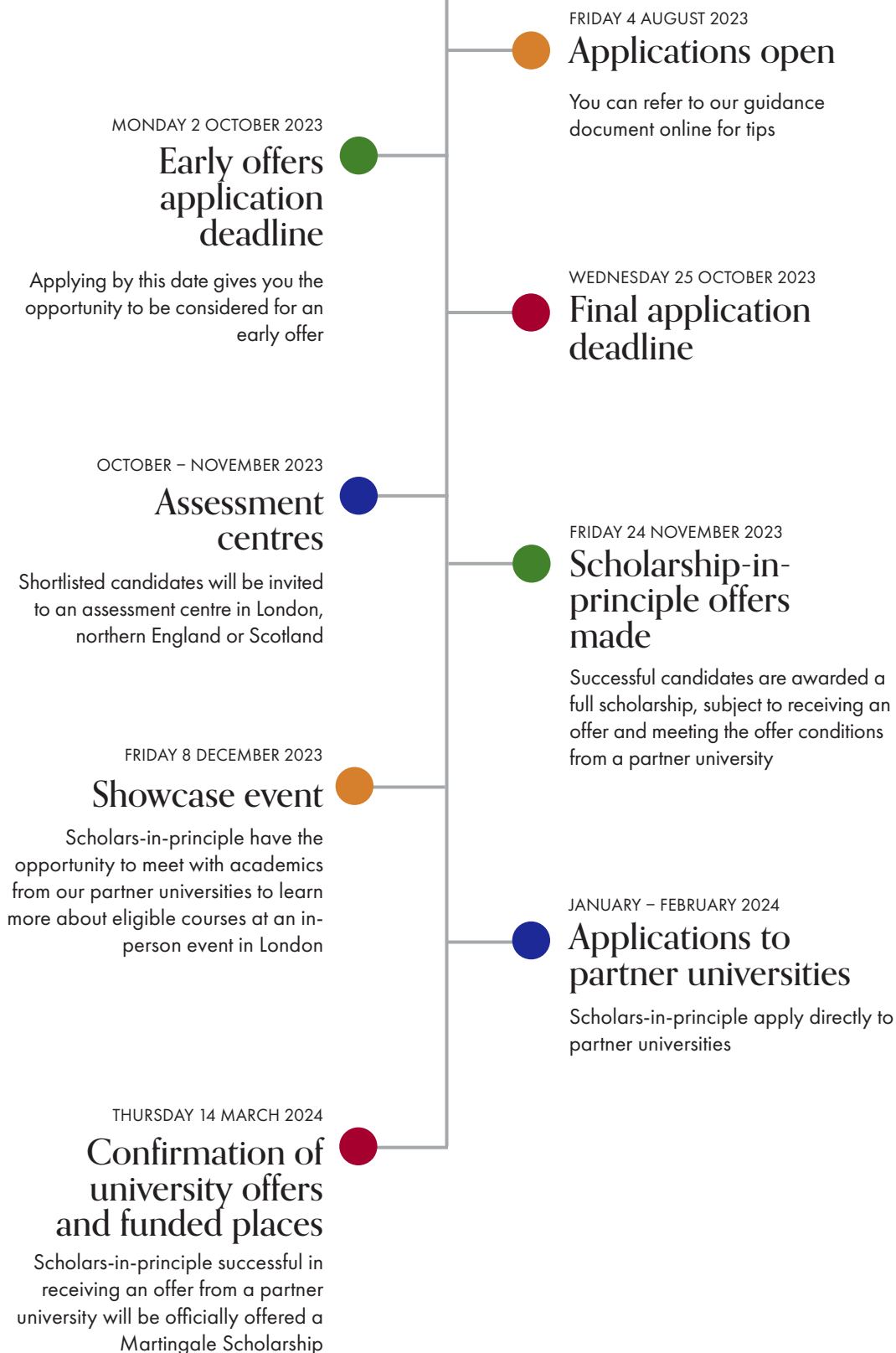
## 3) FUNDING ALLOCATION

Subject to a candidate being offered a place by at least one partner university, the Martingale Foundation will allocate one funded place to the candidate. Please note that if a university offer is conditional, the funding from Martingale will also be conditional.

The allocation process will match a candidate's university preferences with the university's candidate rankings. Through this process we aim to place a group of Martingale scholars at each of our partner universities.



# Key dates









# The Martingale Development Programme

As a Martingale Scholar, you will have access to a multi-year programme of support, including leadership training, career development and engagement opportunities. Through the programme, you will gain access to a network of top universities and businesses, including research and industry placements, and will have opportunities to meet with leading figures from across academia and industry.

## ACADEMIC STUDIES

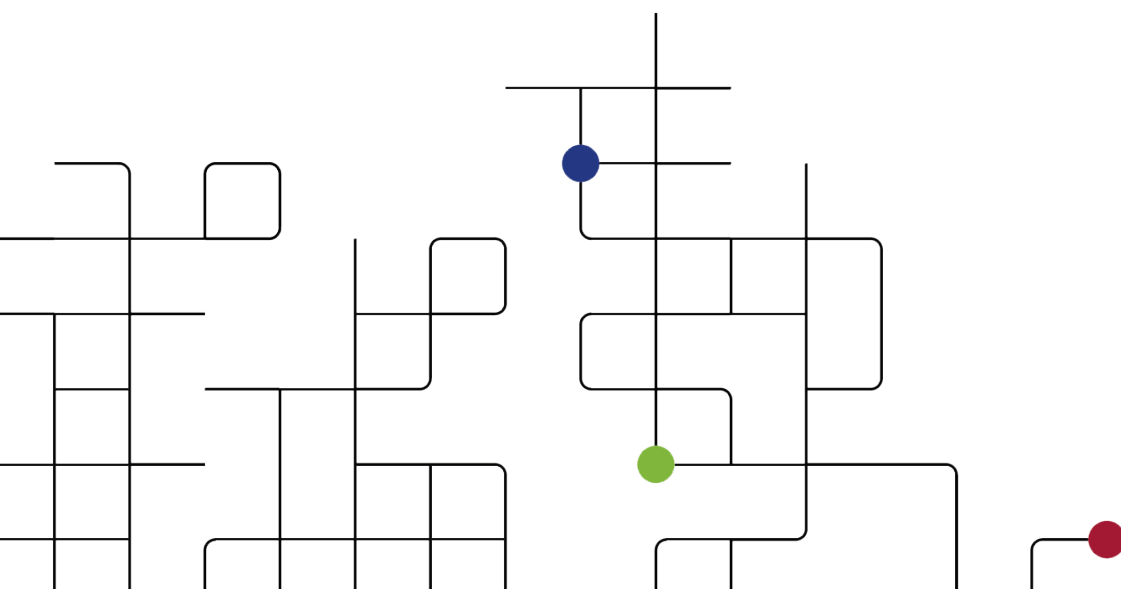
Your master's course will mostly include taught courses and a small-scale research project, which will help you to develop a PhD proposal. Martingale master's scholars will be supported to apply for a Martingale PhD scholarship. Subsequently, your PhD will focus on completing an extended research project or thesis, in which you will work with an academic supervisor and an associated research group.

Each university and department will have their own distinct approach, so it is important to explore your options thoroughly before applying. If you have a preferred field of study, or perhaps even a tentative PhD proposal, you should investigate potential supervisors and research groups that you may ultimately want to work alongside.

## CAREER DEVELOPMENT

Alongside your postgraduate degree, Martingale Scholars receive leadership training, engagement and career development opportunities.

You will be part of a pioneering cohort of postgraduate students, who will become colleagues and friends in the years ahead. While you may be placed at different universities, you will have a common purpose and shared experiences. The programme is focused on your time as a postgraduate student; however, we hope you will consider yourself a Martingale Scholar for life.



# Master's courses on offer

We are delighted to be partnering with leading research universities in the UK to offer postgraduate scholarships. Each partner university has made significant commitments to the programme, providing a world-class experience for Martingale scholars.



University of  
**BRISTOL**

The University of Bristol is one of the most popular and successful universities in the UK. Bristol's academics tackle real-world, global challenges and look to make an impact by working with policy makers and industry partners. The School of Mathematics provides a range of high quality teaching and research programmes, and graduates go on to work in a wide variety of jobs.

- MSc Mathematical Sciences (12 months)



THE UNIVERSITY  
*of* EDINBURGH

The University of Edinburgh is one of the world's top universities, consistently ranked in the world top 50 and placed 15th in the 2023 QS World University rankings. The School of Mathematics has an outstanding reputation and offers a wide range of undergraduate, MSc and PhD programmes.

- MSc in Computational Applied Mathematics (12 months)
- MSc in Operational Research\* (12 months)
- MSc in Statistics and Operational Research (12 months)
- MSc in Statistics with Data Science (12 months)

\*Once admitted to the MSc in Operational Research, students have the option to add a specialisation in Computational Optimization, Data Science or Risk



UNIVERSITY OF  
**CAMBRIDGE**

The University of Cambridge is one of the world's oldest universities and leading academic centres, and a self-governed community of scholars. Its Faculty of Mathematics offers courses that provide deep fundamental understanding and broad exposure to the subject and its applications, enabling students to develop their problem-solving abilities and capacity for independent study.

- MPhil in Mathematics (12 months)
- MASt / MMath in Mathematics (Part III) (9 months)

## Imperial College London

Imperial College London is a global top 10 university with a world-class reputation in mathematics, science, engineering and business. Its Department of Mathematics is a leading international centre for research and teaching and regularly makes world-leading and discipline-defining contributions. More widely, it identifies new areas where mathematics can positively impact science, the economy and society.

- MSc in Applied Mathematics (12 months)
- MSc in Pure Mathematics (12 months)
- MSc in Statistics (12 months)





King's College London is an internationally renowned university delivering exceptional education and world-leading research. Its Department of Mathematics, which is home to over 70 internationally renowned academic staff, has a distinguished scientific tradition in pure and applied mathematics, and statistics.

- MSc in Mathematics (12 months)
- MSc in Complex Systems Modelling (12 months)
- MSc in Theoretical Physics (12 months)
- MSc in Statistics (12 months)



The University of Oxford is the oldest university in the English-speaking world, with an outstanding global reputation for its teaching, research and contributions to society. Its Mathematical Institute in the Andrew Wiles Building provides an outstanding environment and state-of-the-art facilities for mathematical teaching and research, enabling both students and academic staff to study and work together across all fields of mathematics, from number theory to the mechanics of the human brain.

- MSc in Mathematical Science (9 months)
- MSc in Mathematical and Theoretical Physics (9 months)
- MSc in Mathematics and Foundations of Computer Science (12 months)
- MSc in Mathematical Modelling and Scientific Computing (12 months)



The University of Manchester

Since 1824, great minds have come to the University of Manchester to challenge assumptions, create the exceptional and change the world. Manchester has been at the forefront of mathematics for more than a century and the University has helped some of the biggest names in the subject during this time. The Department of Mathematics is the perfect platform for launching a successful career built on a strong maths foundation.

- MSc in Pure Mathematics (12 months)
- MSc in Pure Mathematics and Mathematical Logic (12 months)
- MSc in Applied Mathematics (12 months)
- MSc in Statistics (12 months)



Founded in 1826, University College London is London's leading multidisciplinary university, with more than 13,000 staff and 42,000 students from 150 different countries. Its Departments of Mathematics and Statistical Science work closely together as constituent parts of UCL's Institute for Mathematical and Statistical Sciences (IMSS), covering many areas of modern pure and applied mathematics.

- MSc in Mathematical Modelling (12 months)
- MSc in Data Science (12 months)
- MSc in Statistics (12 months)

# Meet Iman

Iman will be undertaking an integrated PhD at UCL, pursuing her passion for machine learning and statistics.

My bachelor's years [as a Mathematics student] were highly formative not only through outstanding teaching but also enriching research opportunities. Spending hours on end thinking, reading, solving mathematical problems on numerous topics made me realise the importance of Pure Mathematics in Data-intensive Sciences and their large number of questions left to be solved through research.

I soon discovered that Machine Learning Theory perfectly resonates with my combined wish to solve abstract questions in Linear Algebra, Probability and Statistics while keeping an anchor in the life sciences. I knew from then that I wanted to become one of those Maths and Machine Learning researchers working to find real-world improvements on the long-end.

I was particularly drawn to the Martingale Foundation for their promotion of shared education and community among passionate mathematicians with diverse research interests and backgrounds.

If you are looking forward to furthering your studies into a research career and value the opportunity to meet incredible mathematicians with backgrounds across all boards, this scholarship and community may be the one for you.

'I believe being a Martingale Scholar will not only help me become an impactful researcher, but also help me give back the opportunities I was given to further my postgraduate education.'

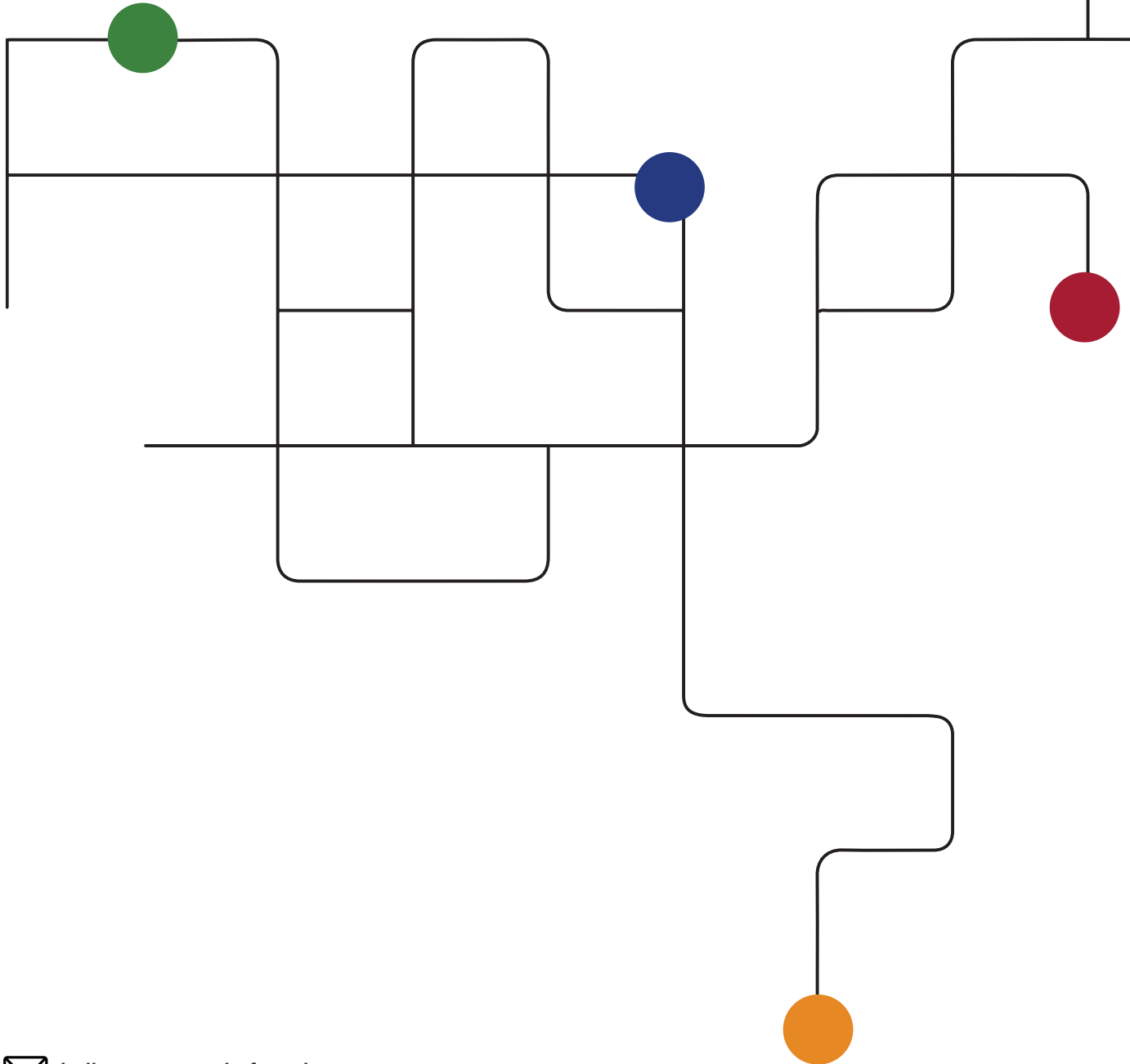
IMAN





# MARTINGALE

POSTGRADUATE FOUNDATION



 [hello@martingale.foundation](mailto:hello@martingale.foundation)

 [www.martingale.foundation](http://www.martingale.foundation)

 [@WeAreMartingale](https://www.instagram.com/WeAreMartingale)

 [@WeAreMartingale](https://www.twitter.com/WeAreMartingale)

 [MartingaleFoundation](https://www.linkedin.com/company/MartingaleFoundation)